

# A Poem to Nature

2025 Community Impact Report







Dear friends,

A great garden is not just a physical space, but a temporal one as well. From the ancient forces that shaped the land, to the founding visions that established its unique course, Bloedel Reserve is a beautiful tapestry of history and place. Many hands cared for it over the decades, and countless memories are embedded in each step along its paths, creating fertile ground for the next chapter.

Reflecting on 2024, a time of new beginnings, we are struck by the incredible sense of shared commitment to the legacy and future of the Reserve. Together, the staff, board of trustees, volunteers, donors, members, and visitors create something that is truly one of a kind. We hope that as you review the achievements of the past year, you feel a sense of pride in being part of that community.

The poetry of nature is humbling and inspiring. Each seed and spore is an embodiment of intention, threads that stretch through time and place, meeting the present with beauty.

Thank you for stewarding this incredible place.

Sincerely,

Evan Meyer  
President & CEO

Nate Thomas  
Chair of the Board of Trustees

#### FINANCE

Renee Kok  
Director of Finance  
Sara Carlson  
Accounting & Payroll Manager  
Kristin Dalhoff  
Membership & Data Entry Coordinator

#### FACILITIES

Joe Picuch  
Director of Facilities  
Ben Buchanan  
Facilities Manager  
Melissa Carlsen  
Housekeeper  
Don McKinney  
Trails Specialist  
Ethan Searer  
Grounds & Facilities Technician

#### EXECUTIVE OFFICE

Evan Meyer  
The Richard A. Brown President & CEO  
Alyson Coote  
Director of Human Resources  
Amy King  
Creative Residency Manager  
Jen Layne  
Communications Manager  
Erin Toner  
Executive Assistant  
Tara Wittrup Moyer  
Well-Being Program Manager

#### DEVELOPMENT

Madeline Read  
Director of Development  
Rebecca Edgren  
Development Coordinator  
Audrey Harmon  
Development Manager

#### OPERATIONS

Dan Walker  
Director of Operations  
Sally Levey  
Events Manager  
Andrea Mercado  
Retail Buyer  
Kate Sunderland  
Volunteer & Tour Coordinator  
David Jones III  
Guest Services & Retail Manager  
Jorby Alano  
Guest Services &  
Retail Assistant Manager  
Guest Services Associates: Brynn Chivers, Laura Fayollat-Boudreaux, Chris McLain, Abner Senires, Steven Starlund, Gayl TenEyck

#### HORTICULTURE & DESIGN

Kaslin Daniels  
Director of Horticulture & Design  
Dave Amos  
Turf Specialist  
Philip Bloomquist  
Living Collections Curator  
Bob Braid  
Caretaker,  
Senior Horticulturist  
Christianna Edwards  
Apprentice  
Ken Little  
Senior Arborist  
Ann Mackey  
Horticulturist  
Henry Molendijk  
Trail Raker  
Andy Moss  
Gardens East Manager  
Sonja Parker  
Senior Horticulturist  
Sean Peterson  
Gardens North Manager  
Darren Streng  
Gardens West Manager  
Tobin Tripp  
Sustainability Coordinator  
Haley Wiggins  
Gardens South Manager





#### BOARD OFFICERS

Nate Thomas  
*Board Chair and  
Executive Committee Chair*  
Sandra McIver  
*Vice Chair and Facilities & Capital  
Improvements Committee Chair*  
Todd Adams  
*Treasurer and  
Finance Committee Chair*  
Carol Adelson  
*Secretary*  
Deborah Schenk \*  
*Immediate Past Chair and Governance  
Committee Chair*

#### BOARD MEMBERS & COMMITTEE CHAIRS

Ted Andrews  
Erin Banasik  
*Development Committee Chair*  
Jim Clune  
Steve Davis \*  
Bob Jakubik  
Jim Kelly  
Mark Levine  
Andy Maron \*  
John Milberg  
*Horticulture & Design Committee  
Chair*  
Justine Milberg  
Becky Miller  
*Audit Committee Chair*  
Steve Prentice  
Martha Rogers  
Vanathi Siddaiah  
Kat Sundberg  
Rolfe Watson  
Robin Wright

#### SENIOR ADVISORY COUNCIL

Barbara Anderson  
Debbi Brainerd \*+  
Stacie Crooks  
Molly Hogger  
Judy Karr  
Suzanne Kelly \*  
Paul Kundtz \*  
David Lewis  
Chuck Little \*+  
Richard Mahoney  
John Morris  
Sue Nevler  
Fred Pakis  
Cassie Picha  
Suzanne Ragen  
Alice Shorett \*  
Robert Skotheim +  
Hope Stroble  
Alice Tawresey  
Karen Thomas  
Sarah Wallace  
Karla Waterman

#### VOLUNTEER ADVISORY BOARD

Susan Beecham  
Johanna Caslander  
Wendy Seanor  
Tom Strid  
Necie Toohey

#### IN MEMORIAM

Connie Albrecht  
Johnna Kleisner

\* Former Board Chair  
+ Emeritus Trustee

266,400,000 steps taken  
on walks through the Reserve



**Thank you** to all donors, volunteers, community partners, and visitors.

We are looking forward to a beautiful year ahead and hope to see you at these events in 2025!

- Garden Party: Thrive from Deep Roots 8/7
- Summer Celebrations 7/18 and 8/29
- Oktoberfest 10/4
- Solstice Walks 12/17-21





# Cultivating Innovation



Christianna Edwards enjoying her 11-month Horticulture Apprenticeship



Our 2024 Summer Interns were an amazing group of people—their future is bright!



From June through August, five Summer Horticulture Interns rotated through different garden areas, gaining essential horticulture skills and knowledge. This year’s interns came from the University of Vermont, University of Michigan, Weber State University, University of St. Thomas, and the Adult Living Program with Bainbridge Island School District (BISD). In addition to caring for the grounds at the Reserve, the interns helped maintain the gardens at the Suquamish Museum as part of their program.

Since 2018, more than **12,000** individual plants have been planted in the Buxton Bird Marsh and Pollinator Meadow, including flowering perennials, trees, shrubs, ferns, and grasses.



## Reflection Pool water

is provided by a natural spring and not filled by us. The reflection pool drains towards the Japanese Garden.

**57**  
species of moss and liverworts in the Moss Garden



*Helleborus x hybridus*  
(Party Dress)



*Wollemi pine*

**43**  
plants that are endangered in the wild live at the Reserve.

The Reserve contains **4,112** total plant accessions.



# Sustaining Nature

The Forest Management Plan (FMP) was completed, which provides detailed plans for preparing and implementing management activities across the Reserve's 100+ acres of forests.

Short-term goals (within 10 years) include enhancing wildlife habitat for terrestrial and aquatic species, controlling invasive plants, improving climate resilience, reducing fire risk, and constructing trails to facilitate management and access.

The key long-term objective (beyond 30 years) is to foster a late seral forest ecosystem within Bloedel Reserve. This would develop a diverse mix of tree species, ages, and sizes, woven into a complex structure of downed logs, large snags, canopy gaps, and a range of hardwoods and conifers—ultimately promoting biodiversity and wildlife habitat.

There are roughly **15,000 trees** in our forest reserve, which cover over 100 acres. The tallest trees in the Reserve are over 190 feet tall—almost as long as the Reflection Pool!

A new **beaver deceiver** was added in the Bird Marsh, and we successfully welcomed two beavers.

**18 speckled Sussex chickens** played a vital role in clearing an area within the Pollinator Meadow, targeting invasive pasture grasses and reducing the seed bank as they foraged for soil-borne insects and seeds.

**10 amphibian monitoring surveys** were conducted in the Bird Marsh and Reflection Pool by volunteers and staff, aiming to track amphibian populations and ecosystem health. Volunteers and staff found a total of 198 individual egg masses, larvae, groups of tadpoles, and adults of four species, including northern red-legged frogs, Pacific chorus frogs, long-toed salamanders, and northwestern salamanders.

Our dedicated **bird survey volunteers** Grace and Ollie Oliver completed 45 bird surveys in Gardens South in 2024.

- The greatest number of species observed in one survey in 2024 was 45 on July 7th.
- The greatest number of individual birds observed in a single survey was 211 on December 16th, when a flock of about 100 pine siskins visited.

Bloedel Reserve generated roughly **50 cubic yards** of compost.

We distributed **3 different mulch mixtures** around the gardens, consisting of about 100 cubic yards.





# Fostering Creativity

The Creative Residency invites artists, writers, poets, musicians, and other creative individuals to spend three weeks living and working on the grounds. Through their work, they inspire, challenge, and enrich our lives.



The Community Creative Project at Bloedel Reserve fosters creative thinking inspired by nature and explores the connection between humans and the environment. The program provides new ways for the community to engage with the Reserve while offering participants the time and space to develop a deeper relationship with nature.

## CREATIVE RESIDENTS

Carla Bengston  
Mark Eischeid  
Ella Jacobsen  
Tsering Lama  
Barbara Lawrence  
*Suquamish Tribal Resident*  
Charles Matson Lume  
Catherine Alice Michaelis  
Justin Neal  
Nicole Otero  
Maren Salomon  
Caitlin Scarano  
Lisbeth White

## COMMUNITY CREATIVES

Amber Chiozza  
Scott Pasco  
Amy Pleasant  
Martha Rogers

**2,015** people  
attended programs to find  
creativity and inspiration.

**268** children  
and caregivers came to  
Saturday Story Time at  
the Residence.

Approximately **75-80%**  
of all visitors interacted with  
July 2023 Creative Resident  
Alison Stigora's site-specific cedar  
and moss installation, *Embrace*.

In **September**  
an Olympic College Cohort  
of four students spent a  
week on-site, working  
collaboratively on  
nature-based projects,  
earning independent study  
credit for their work.

## Love Letter to Myself as She Belongs to the Salish Sea

By Lisbeth White, 2024 Creative Resident

*It was cold but not a plunge:  
Our hands joined, we paced out  
until the cove water met our collarbones  
(yes, I thought of others, differently  
shackled, who also walked  
into the sea). The cold never stopped  
prickling my belly, never stopped  
burning my legs. Wracked in shivers,  
my body stamped and stuttered  
my voice. I couldn't sing, so I turned  
away from the shore to see  
the smooth undulation of light  
on the surface; so softly, steely, pearl.*

*How light makes the shape of water,  
makes the motion of water,  
known.*

*You should know:  
there have been many walks  
on powdery beaches, on mist  
cradled bluffs, when I craved  
some oblivion—not surrender,  
not suicide—Just to be taken in  
by a body bigger and beholden  
only to gravity and tide.*

*But it is this sea I enter, this sea  
with wrackline laced with  
splintered shells of moon snails.  
Because I want to imagine,  
when the tides pull back,  
my own wrackline will be as  
beautifully and delicately  
fractured.*

*My friends singing, I let go  
of their hands. Still not warm. Still  
cold. Still, I closed my eyes,  
let myself be a woman willing  
to escape any shore. Let myself  
stand in the ocean, just like her—  
head back, sealight on my face,  
and on the horizon, a vapor cloud  
of whale's breath, an exhale,  
a doorway.*



# Nourishing Well-Being

## Strolls for Well-Being

190 individuals participated in our flagship well-being initiative. Participants report deeply personal and meaningful experiences, “A place of solace during a difficult season of life.” Each received a journal and a six-month well-being membership.

## Follow the Sun with Forest Bathing

We held several sessions marking the spring and fall equinoxes, as well as the summer solstice, encouraging participants to slow down, engage their senses, and practice routines that foster a restorative connection with nature.

## Grief Groups with Island Volunteer Caregivers (IVC)

Six new IVC volunteer facilitators were trained and 32 grief group members participated in weekly meetings in the serene setting of the Japanese Guest House, each receiving a six-month well-being membership.

## Mindfulness Meditation

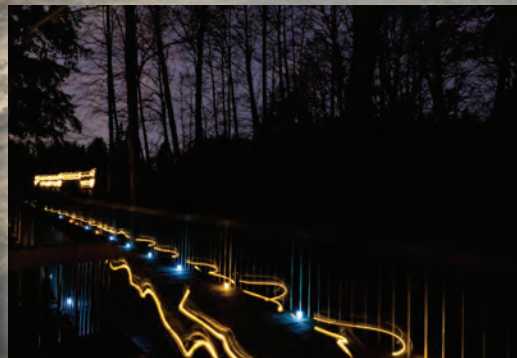
Monthly meditation sessions were held for 180 participants, incorporating nature poetry and sound bowls whose soothing vibrations contribute to deep relaxation and healing for more than 8,100 meditation minutes.

## Summer Sunset Walks

Over 1,000 visitors enjoyed wine and picnicking on the Residence lawn during warm summer evenings.

## Winter Solstice Walks

830 visitors experienced the Reserve's tranquility at night during 5 walks, enhanced by an enchanting display of lights to mark the occasion.





My relationship with Bloedel Reserve began in a moment of synchronicity. Not, as you might expect, on my first visit to the gardens—and not even, ironically, on the grounds themselves, but in a hospital bed.



I had encountered Bloedel Reserve already—just before our family moved to Bainbridge Island in Summer 2006. The grounds weren't yet a public garden, so it was through the hospitality of a friend that I first visited. On that walk, I felt the beauty and singularity of these landscapes. I soon became a member and always enjoyed my visits, but it wasn't until 2016 that my real connection with the gardens began.





## From Healing to Harmony: My Journey with Bloedel Reserve

—by Erin Banasik, *Strolls for Well-Being* participant and Bloedel Reserve Trustee

From a hospital bed, from the middle of a hard year, I found myself holding an invitation from the Reserve to participate in the Strolls for Well-Being program at Bloedel. Just reading about it was like water for a parched soul. Of course, I signed up. And, as it turned out, my instinct was right. Strolls gave me more than help along my healing journey: I developed a relationship with this place. Every time I came to the gardens, I left feeling restored.

Nine years later, I still do. At the end of that Strolls session, I realized the invitation had come from a friend—one I hadn't yet met.

The Strolls Program left me humbly grateful to many people I had never met—people I never could meet—who created this place for purposes such as these. My early encounters with the gardens came through such fluid and neighborly generosity—friends'

hospitality, a free public program—work that I implicitly knew needed to continue, but I didn't learn for some time that I could give to Bloedel to support.

Now, I give from gratitude, to sustain this place because it continues to sustain me, and in hope that its healing beauty will meet many, many other people.



# Creating Inclusive Experiences

Our accessibility initiatives continued to expand, offering new ways to serve the community.



1. Nearly 3,500 visitors enjoyed our pay-what-you-wish [Welcome Wednesdays](#), and close to 300 people accessed the Reserve for just a dollar through the [Museums for All\\*](#) program.

2. The [Washington Youth Challenge Academy](#) continued its work on English ivy removal, while the [BISD Adult Living Program](#) focused on maintaining the Moss Garden. We also welcomed volunteers from [Stephens House](#) for the first time, who now volunteer monthly in the Moss Garden.

• [995 buckets](#) of debris were filled by Moss Garden volunteers to keep it looking beautiful.

• In 2024, the WA Youth Challenge Academy cadets visited the Reserve six times bringing around 55 cadets plus staff each time; in all, they spent [2,000 hours](#) pulling [120 cubic yards](#) of ivy.

3. As part of our commitment to increasing accessibility, we piloted a program with Bainbridge Island Parks and Recreation District’s [Adaptive Recreation Program](#). Over six weeks, participants with neurodiversity and mobility challenges explored specially curated experiences in the gardens.

4. In our ongoing Inclusion, Diversity, Equity, and Access (IDEA) efforts to be more inviting to families, we continued our [Guided Garden Walks](#) in collaboration with Kids Discovery Museum (KiDiMu) and launched [Story Time at the Residence](#) on the fourth Saturday of every month, which was attended by 268 people, including one winter session with 86 attendees!

5. We introduced an [Accessible Stroll & Roll Solstice Night](#). In partnership with the Accessible Communities Advisory Committee, Stephens House, Bainbridge Island Metro Park & Recreation District’s Adaptive Recreation Program, and BISD Adult Living Program, the event welcomed 30 participants, along with their caregivers.

6. Each year, a Suquamish Tribal Member is offered the [Suquamish Tribal Residency](#) as part of our Creative Residency program. The resident is selected in collaboration with the Suquamish Museum and Suquamish Cultural Co-op. Additionally, [Suquamish Tribal Members enjoy free access](#) to the Reserve during public hours, without the need for timed tickets.

\* Museums for All is a national program, of which Bloedel Reserve is one of 1,400 participants. Anyone receiving food assistance can gain reduced admission to cultural organizations (museums, gardens, zoos, etc.) throughout the United States simply by presenting their EBT card and a photo ID.

“My husband and I were so thrilled to have participated in the magical Adaptive Winter Solstice Walk! ...it warmed us from the inside out.”



## COMMUNITY PARTNERSHIPS\*

American Public Gardens Association  
Bainbridge Artisan Resource Network  
Bainbridge Arts and Crafts  
Bainbridge Community Foundation  
Bainbridge Island Chamber of Commerce  
Bainbridge Island Cooperative Weed Management Area  
Bainbridge Island Land Trust

Bainbridge Island Metro Park & Recreation District  
Bainbridge Island Museum of Art  
Bainbridge Island Parks & Trails Foundation  
Bainbridge Island Poet Laureate Program  
Bainbridge Island School District Adult Living Program  
Bainbridge Island Studio Tour  
Bainbridge Performing Arts  
Bainbridge Prepares  
Bainbridge Senior Living

Bats Northwest  
Beavers Northwest  
Bon Bon Candies  
Carley Construction  
Cascade PBS  
Cascadia Forest Therapy  
City of Bainbridge Island  
Crabtree Kitchen + Bar  
Eagle Harbor Book Co.  
Fishline  
Flamingo Audio  
Helpline House  
HomeStreet Bank  
Island Cool Ice Cream  
Island Volunteer Caregivers

IslandWood  
Kids Discovery Museum  
Kitsap Community Foundation  
Kitsap County Accessible Communities Advisory Committee  
North Kitsap High School  
Olympic College  
One Call for All  
Plein Air Washington  
PNW Bainbridge  
Puget Sound Energy  
Puget Sound Gardens  
Stephens House  
Suquamish Foundation

Suquamish Museum  
Sussey Moving Company  
Sweet Dahlia Baking  
Tidelands Magazine  
Todd H. Adams, DDS  
Trillium Employment Services  
Visit Bainbridge  
Wanderlust NW Catering Co.  
Washington Youth Challenge Academy  
West Sound Wildlife Shelter  
Winslow Law Group  
Woodland Park Zoo

\* Partial list



# Honoring Dedication

All of us at the Reserve are deeply grateful to our incredible community of volunteers, including greeters, docents, and garden area helpers.

## VOLUNTEERS

Washington Youth  
Challenge Academy  
Ellen Weaver  
Michael Webber  
Juliana Weis  
Teri Weldy  
Joe Wells  
Robert Weschler  
Suzanne Wilkin  
Barb Wills  
Angela Winks  
Traci Woody  
Fatima Young  
Julie Zalikowski

Stephanie Seigh  
Zoey Seigh  
Stephen Shapro  
Vicki Shapro  
Kari Siceloff  
Ann Slichter  
Araya Sol  
Kate Stackhouse  
Carolyn Standridge  
Joseph Stanko  
Stephanie Steele  
Katherine Stevens  
Willow Stewart  
Tom Strid  
Ying Ying Tan  
Brenda Tate  
Alice Tawresey  
Ruth Thomas  
Teresa Thorpe  
Necie Toohey  
Brianna Torres  
John van den Meerendonk  
Jack Van Derrick  
Brandy Van Sickle  
Nicole Vani  
Roeliena Vanzanten  
Maia Vigneron  
William Vinci  
Andrea Voulgaropoulos  
Pamela Wachtler

^ Deceased

Nancy Mumm  
Helen Muterspaugh  
Carole Nelson  
Joy Novak  
Debbie Nyberg  
Susan Oblak  
Laura Olesen-Berge  
Grace Oliver  
Ollie Oliver  
Jodi Olson  
Rosalie Ott  
Rhonda Patrick  
Lori Pederson  
Steffi Pencovic  
Katharine Michele  
Perras  
Candace Peters  
Betty Petersen  
Lynette Peterson  
Shannon Ramos  
Jennifer Recker  
Carol Reid  
Melissa Rockefeller  
Martha Rogers  
Donald Rooks  
McKenna Roots  
Jonathan Ross  
Judy Ruliffson  
Judy Rutberg  
Iwona Sakrejda  
Joe Salter  
Mark Salvadalena  
Kerrie Sanson  
Janet Sargent  
Takako Satoh  
Linda Scadron-Wattles  
Charles Schafer  
Pamela Schied  
Jonnie Schmidt  
Marianne Schovsbo  
Ernestina Schwartzman  
Wendy Seanor  
John Seidler

Peter Guerrero  
Dorothy Guzzwell  
Elaine Hall  
David Handel  
Anne-Marie Heckt  
Nicholas Heinzelman  
Mary Hendry  
Teresa Hermosillo  
Charleen Hern  
Amy Howard  
Lori Hurley  
Ariana Hurtado  
Myrt Ipema  
Anty Ishak  
Joshua Jacobson  
Brenda James  
Andrew Jobs  
Kirsten Jones  
Matilda Jurdal Thulin  
Johann Kalb  
Evan Karr  
Lilian Kelley  
William Kelley  
Bike Kilic  
Dennis Kirkpatrick  
Victoria Kleiven  
Kathy Kraft  
Amy Kuhl  
Grace Larsen  
Christine Laub  
Andrew Leaverton  
Carolyn Leigh  
Amber Little  
Sue Lukins  
Gunda Lunde  
Susan Lundman  
Sandra Mackie  
Kathy Maher  
Richard Mander  
Maria Marsala  
Christopher Marten  
Megan McCafferty  
Joy McCallister  
Andrea Mercado  
Debra Merkel  
Sofia Metcalf  
Patrick Miller  
Meg Milligan  
Henry Molendijk  
Matthew Moody  
Danis Morgan  
Susan Morss  
Charlotte Moss  
Patrick Moulds

Kristina Case  
Charlotte Caskey  
Johanna Caslander  
Joan Chandler  
Ken Christopher  
Jim Clune  
Kathy Cordaro-Brunke  
Hunter Cromwell  
Dianne Curtin  
John Cutler  
Marsha Cutting  
Jody DeLay  
Caleb Delecki  
Marilyn Dickson  
Monica Dimas  
Claudia Dixon  
Rachael Donham  
Mohan Duggal  
David Dwyer  
Ann Eklund  
Jazz Epstein  
Eric Erickson  
Riley Evad  
Emma Fingerson  
Erin Fisher  
Jaeden Fisher  
Laurel Fisher  
Jacob Freimark  
Ursula Funari  
Deborah Furlan  
Connor Gage  
Vincent Garcia  
Stefan Gaschott  
Anne Geiler  
Kurt Geisreiter  
Sam Gerlach  
Masuko Giesecke  
William Giesecke  
Carolyn Gillick  
Maia Golinska  
Joe Gondar  
Donna Gonder  
Lucy Gorlitz  
Tricia Grace  
Rebecca Graham  
Bridgette Grey

Alexa Allen  
Becky Allen  
Karen Anderson  
Julie Armitage  
Kathryn Arnold  
Susannah Arntson ^  
Mary Arul  
Joan Bachman  
Kianna Bair  
Emily Barnett  
Emily Barrows  
Susan Beecham  
Larry Betsch  
Keiki Bianchi  
Maya Bilbo  
Bill Biscomb  
Liza Biscomb  
Arni Blomquist  
Gail Bohnhoff-Hlavacek  
Peggy Booth  
Ron Booth  
Lawrence Bouma  
Marjory Bouma  
Aline Bradley  
Rachel Brandt  
Marcus Bray  
Janet Brookes  
Christine Bruner  
Eric Bruner  
Jessica Bruner  
John Bullivant  
Kathleen Bullivant  
Samantha Burgh  
Jane Carlin  
Aalyiah Carrier  
Tatiana Carter



224 amazing volunteers contributed  
a record-setting 8,747 volunteer hours

An impressive 32% increase from previous year

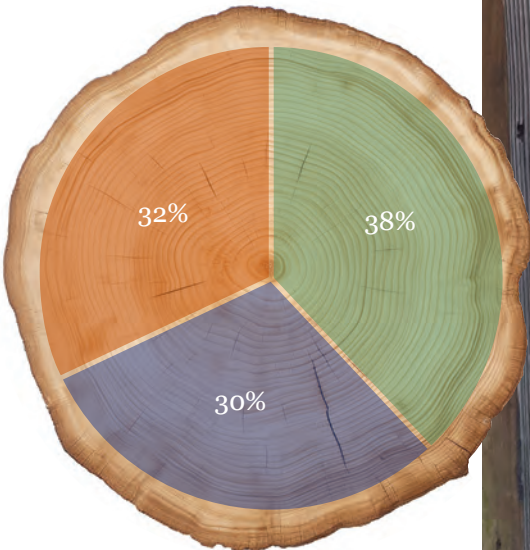
Their dedication is equivalent to the work  
of more than four full-time employees





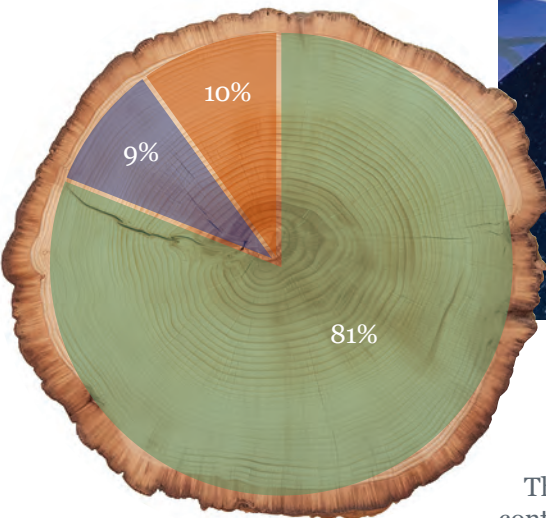
# Facts & Figures

## Support & Revenue \$4.3 M



- Ticket/Membership/Other
- Contributions
- Endowments

## Expenses \$4.3 M



- Program
- Fundraising
- Management



*Kaslin Daniels, Director of Horticulture & Design, trying her hand at pulling a print of a tree ring—a project of Catherine Alice Michaelis, 2021 and 2024 Creative Resident*

In 2024, our expenses were \$4.3 million to keep the Reserve running. The \$4.3 million in revenue that sustained our programs is a balanced blend of contributed, earned, and investment income. More than \$1.38 million was earned through admissions and memberships.

We are so grateful to all of the supporters of the Reserve who provided \$1.285 million in new gifts. This amazing community support infused \$145,000 in program funding for Creativity & Inspiration and Nature & Well-Being offerings.



# Thank You, for the Years of Dedication

## VISIONARY CIRCLE

Bloedel Reserve's Visionary Circle celebrates donors who have generously contributed major gifts over their lifetime, supporting transformative initiatives and ensuring the Reserve's ongoing sustainability.

Anonymous (12)  
Alison Andrews ^  
Erin & Bob Banasik  
Sally Black ^ & Alan Black ^  
Debbi & Paul Brainerd  
City of Bainbridge Island  
Wendy & Jeff Dahlgren  
Thomas Fenwick  
Fletcher Bay Foundation  
Susan Guffey ^ & Gene Priestman ^  
Nancy & Glenn Haber  
Lois Hartman & Richard Mahoney  
Gretchen Hund & Ted Andrews  
Juniper Foundation  
Suzanne Kelly & Donald Kelly ^  
Johnna Kleisner ^ & Fred Kleisner  
Deb Krieger  
Lady Foundation  
Mark Levine & John Keppeler  
Davonne Loup ^ & Carl Westphal  
Laura & Roy Lundgren

Sandra & Bill McIver  
Justine & John Milberg  
Becky Miller  
Pendleton & Elisabeth Carey Miller  
Charitable Foundation  
Nancy Nordhoff  
Pakis Family Foundation  
Rebecca Pierson & Frederick Pakis  
Suzanne Ragen & Brooks Ragen ^  
Cynthia Sears & Frank Buxton ^  
Sears-LeDorze Family  
Alice & David Shorett  
Pauline & Edgar Stern Foundation  
Karla & Gary Waterman  
Bagley and Virginia Wright  
Foundation  
Merrill Wright  
Virginia Wright ^ & Bagley Wright ^

## LEGACY CIRCLE

The Legacy Circle honors donors who have committed to leaving a gift to Bloedel Reserve in their estate plans, securing its future impact for generations to come.

Anonymous (2)  
Sue Andresen & Dennis Kirkpatrick  
Todd Adams  
Beth Bradley  
Kathleen & John Bullivant  
Elizabeth & Scott Coplan  
Steve Davis  
Lynn & Elliott Green  
Gretchen Hund & Ted Andrews  
Suzanne Kelly  
Kimi Kinoshita & Gary Nakamura  
Mark Levine & John Keppeler

David & George Lewis  
Terri McGinnis  
Justine & John Milberg  
Carole Nelson  
Bethany & Shawn O'Neill  
Cassie & Doug Picha  
Suzanne Ragen & Brooks Ragen ^  
Gaye & David Reynolds-Gooch  
Joseph Salter  
Deborah & Proctor Schenk  
Eulalie Schneider  
Alice & David Shorett  
Hope & Dick Stroble  
Carla Stroh & John Stroh ^  
Sarah & Graehm Wallace

^ Deceased





# Landscape of Giving

## SUSTAINER AMBASSADORS

**\$10,000+** pledged annually for a minimum of 5 years or equivalent gift

Anonymous (4)  
Todd Adams  
Carol & David Adelson  
The Aggabagga Family Fund  
Bainbridge Community Foundation  
Erin & Bob Banasik  
Alan Black ^  
City Of Bainbridge Island  
Tanice & Vince Corti  
Wendy & Jeff Dahlgren  
M. Jean Fisher Charitable Trust  
Fletcher Bay Foundation  
Naomi Gary & Thomas Fenwick  
Joshua Green Foundation  
Nancy & Glenn Haber  
Lois Hartman & Richard Mahoney  
Gretchen Hund & Ted Andrews  
Karen Hust & Todd Vogel  
Pamela Johnson & Carl Haefling  
Juniper Foundation  
Johnna Kleisner ^ & Fred Kleisner  
Deb Krieger  
Lady Foundation  
Mark Levine & John Keppeler  
Sandra & Bill McIver  
Leslie Meadowcroft-Schipper & Frank Schipper  
Justine & John Milberg  
Becky Miller  
Pendleton & Elisabeth Carey Miller  
Charitable Foundation  
Alison Milliman  
Mary Lynn & Glenn Mounger  
Sue Nevler  
The Norcliffe Foundation  
Nancy Nordhoff  
Molly Nordstrom  
One Call For All  
Pakis Family Foundation  
Rebecca Pierson & Frederick Pakis  
Suzanne Ragen  
Deborah & Proctor Schenk  
Cynthia Sears  
Alice & David Shorett  
Pauline & Edgar Stern Foundation  
Katie & Bob Strong  
Carl Westphal  
Bagley and Virginia Wright Foundation  
Merrill Wright  
Virginia Wright ^  
Carolyn Wyman & Warren Klink

## SUSTAINERS

**\$10,000+**

Anonymous (1)  
Kathleen & John Bullivant  
Steve Davis  
Molly Hanlon  
Suzanne Kelly  
Carol Maione & Brian Marks  
Sallie & Andy Maron  
Riley & David  
Eulalie Schneider  
Hope & Dick Stroble  
Georgia & Jeff Vincent  
Robin Wright & Ian Reeves  
Sheila Wyckoff-Dickey & Charley Dickey

## CONSERVATIONISTS

**\$5,000 – \$9,999**

Barbara Belt & Paul Erb  
Charlene & Frank Blethen  
T. William Booth  
Leslie & David Brown  
Paul Castanon & William Magnuson  
Caroline Cooley Browne & David Browne  
Susan Dunn  
Janice & Brit Etzold  
Lenore Hanauer Foundation  
Kristin Hannah  
HomeStreet Bank  
Betty Hung  
Karen Jensen-Kelly & Jim Kelly  
Ashley Jones & Chauncey Freeman  
Judy Karr  
Mary & Peter Kerr  
Martha Makosky & Stephen Prentice  
Juliet Sears LeDorze & Phil LeDorze  
Carla Stroh & John Stroh ^  
Karen & John Thomas  
Linda & Andrew Waterman  
Margaret Watkins-Grimm  
Rolfe Watson  
Leslie & Mike Whalen  
Marcia & Klaus Zech

## ARBORISTS

**\$2,500-\$4,999**

Anonymous (1)  
Alaska Airlines  
Jessica & Mark Allsup  
American Public Gardens Association  
Caren & Dave Anderson  
Jacqueline & Tim Antilla  
Carol & Jay Bowditch  
Virginia & Thomas Brewer  
Lucy & Elliott Burkland  
Carley Construction  
Cascade PBS  
Cogwheel Construction  
Anne Dennon  
Lisa & Ron Elzig  
Jean Enersen & Bruce Carter  
Ty Evans  
Gensler  
Sherry & Scott Haber  
Ronnie V. Henderson  
Sheila & Bob Jakubik  
Brandon Keller  
Sally Ketcham & Alyx Fier  
Marianne & Wiley Kitchell  
Barb & John Kittell  
Karyn Lazarus & Mary Kay Chess  
Joanne & Chuck Little  
Hazel & Andrew Lonseth  
Tom Meadowcroft  
Meadowcroft Wines  
Susan & Edward Palmer  
Ellen & Mike Peterson  
Cassie & Doug Picha  
Michelle Porter & Rick Birdsey  
Puget Sound Energy  
Anne Reusche & David Marzahl  
Beverly & Dennis Streng  
Suquamish Tribe  
Marguerite & Nate Thomas  
Tulalip Tribes—Quil Ceda Village  
John van den Meerendonk  
Beverly & David Veterane  
Liz & Fred Walters  
Julie Zalikowski & David Cissell

## HORTICULTURISTS

**\$1,500-\$2,499**

Anonymous (7)  
Todd H. Adams, DDS  
Thomas Adelson  
Barbara H. Anderson  
Sue Andresen & Dennis Kirkpatrick  
Patricia & Charles Bell  
Anjali Berger & Evan Meyer  
Keiki & David Bianchi  
Colette & Warren Boeker  
Faith Chapel  
Jennifer Dixon  
Flamingo Audio  
Jody Foster & John Ryan  
Alden Garrett & Charlie Eriksen  
Emily Gaskin & James Diehl  
Kathy Gerlich  
Deborah Goeas  
Janice & Ford Griswold  
Julie Hamilton  
Sina Irving  
Kate Kavanaugh & Wally Hyer  
Kimi Kinoshita & Gary Nakamura  
Natalie Klinkhammer  
Elizabeth & John Kozleski  
Kurt Kruckeberg & Dan Flores  
Rayne & Joseph Lacko  
Sonya Marinoni & Max Marinoni ^  
Cheryl Mauer  
Ann McCutchan  
Erin & Ed Moydell  
Tanya & Mathew Olliffe  
Bethany & Shawn O'Neill  
Gaye & David Reynolds-Gooch  
Katherine Robertson  
Joseph Salter  
Alison Scholes & Mark Redick  
Dwight Shappell  
Anne & Will Smart  
Judy & Jerry Spigal  
Anne & John Stratton  
James Strickler  
Kathleen & Wayne Sundberg  
Necie & Phil Toohey  
Jeff Tweiten  
Caroline Vannatta & Gregory Riehm  
Sarah & Graehm Wallace  
Tracie & Michael Waxman  
Cynthia & David Welte  
Janet & Fred Williams  
Delight Willing  
Merion & Bagley Wright



## \$500-1,499

Anonymous (2)  
Phoebe Andrew  
Bainbridge Island Review  
Heather & Dave Ballaine  
Carol Bell  
Sharon Bidwell  
Black Family Foundation  
Deirdre & Fraser Black  
Jane & Watson Blair  
Linda Blevins  
Teresa & Andrew Bliss  
Mary & Wayne Booth  
Susan & David Bray  
Robin Calderon  
Paige Carratturo  
Kristina Case & Rick Stanton  
Kathy & Tom Chakerian  
William Champion  
Susan & David Conn  
Gail & Jon Crotty  
John Davis  
Virginia Davison  
Edra & Leigh Drake  
Carol Fiedler  
Janet Flagg & Wayne Rawlins  
Peter Fogliano & Hal Lester  
Lacey & Eric Forner  
Kathleen & Richard Gary  
Lucy & Michael Glenn  
Lynn Grinstein  
Lynne Hart & Justin Morgan  
Marcia & Doug Hastings  
Sue & Dick Haugan  
Charles Howard &  
Ken Beaulieu  
Cynthia Huffman  
Island Cool Ice Cream BI

Phyllis Izant &  
David McInturff  
Jessica & Bill Jesse  
Susie Kennedy-Gray &  
Richard Gray  
Omie & Larry Kerr  
Carole & Jim Kitchell  
Kitsap Bank  
Kitsap Community  
Foundation  
Tania & Gary Koolik  
Debbie & Thomas Kuffel  
Susan & Duane Larson

Jennifer Lau & Rich Able  
Joyce & Tad Lhamon  
Lex Lindsey  
Joanne Maher  
Alysse & Mathew Marshall  
Jennifer Maurer  
Nicki & Michael McMahan  
Joyce Merkel  
John Morris  
Kelly Michaels  
Leslie Newman Design  
Emily Parsons &  
Steve Trimble  
Patricia & Brad Payne  
Susan & Jon Peterson  
Gloria Pfeif  
PNW Bainbridge  
Anne Raisler & Rob Crichton  
Margaret & Jonathan Reeves  
Nan & Bruce Reitz  
Teita Reveley & Tom Reveley ^  
Emily & Jeffrey Rosenberg  
Nancy & Robie Russell  
Sheri & Jeff Scrugham  
Michael Sebastian, Jr.  
Gretchen Seifert  
Luanne Selk & Jon Skillman  
Vanathi & Narendra Siddaiah  
Lisa & Rick Skelton  
Barbara Snapp &  
Phil Chapman  
Shannon Speicher &  
Jonathan Ross  
Jessica Spytek &  
Marvin Sinderman  
Susan Standley  
Kitty Stoner  
Suseyi Holdings  
Tideland Magazine  
Barbara Trafton &  
Bruce Beall  
Michaelene & Ed Treyve  
Samantha Treyve &  
Jason Huemer  
Carol & Sandy White  
Holly & Neal White  
Mitch Wilk  
Eileen & Robert Zube

^ Deceased

*We have done our utmost to ensure the accuracy of these lists. Should you find any omissions or errors, please contact Rebecca Edgren, Development Coordinator, so that we may correct our records.*

[redgren@bloedelreserve.org](mailto:redgren@bloedelreserve.org)  
206-842-7631, x30



## Memorial Gifts

Julie & Bill Marler,  
in memory of Yaroslavna Adams  
Justine & John Milberg,  
in memory of Allison Bassett  
William Champion,  
in memory of Mary Ann Champion  
Elizabeth Steenbeeke,  
in memory of Kolton Hundersmarck  
Justine & John Milberg,  
in memory of Johnna Kleisner  
Richard Monkman,  
in memory of Forest & Marilyn Monkman  
Paula & Tom Strid,  
in memory of Carl Strid

*"The wind blows quietly—  
soft as breath, heavy with time.  
Leaves whisper in circles,  
a quiet remembering."*

## Honorary Gifts

Kathleen & John Bullivant  
and Erin & Ed Moydell,  
in honor of Philip Bloomquist  
Cynthia Oshin, in honor of Alyson Coote  
Barbara Herr,  
in honor of Claudia Haspedis-Dixon  
Emily McGarvey,  
in honor of Andy Moss  
Megan Little,  
in honor of Cassie & Doug Picha  
Marcia Hastings,  
in honor of the staff at Bloedel Reserve  
Ronine Riggins,  
in honor of Darren Streng  
Riley & David, in honor of Haley Wiggins

*Photos: Marion Brenner, David Cohen, Chuck Eklund, Erin Fisher, Tammy Fujihara, Art Grice, Audrey Harmon, Jen Layne, Etta Lilienthal, Martina Machackova, Catherine Alice Michaelis, and Martha Rogers*





## Whispers of Bloedel

*Beneath the hush of cedar shade,  
where fern and moss entwine,  
the hush of time, the crunch of leaves,  
the whispering firs align.*

*Ponds reflect a silver hue,  
where beavers build and dream,  
and herons carve the morning mist,  
in silent threads unseen.*

*A path unfolds in shadowy light,  
soft sounds perk up ears,  
each step a story or revelation,  
a place for joy and cheers.*

*The glen hums in golden hush,  
a stream flowing with ease,  
while petals turn to greet the sun,  
then dance upon the breeze.*

*Through decades of time,  
the seasons ebb and flow,  
Bloedel sings their joyous song,  
for all who choose to slow.*